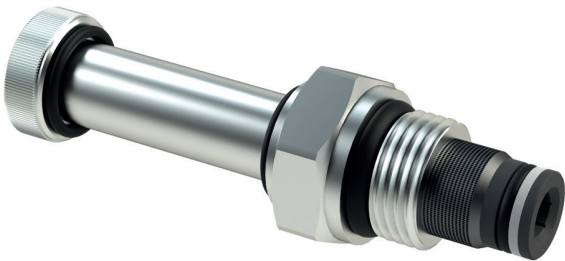


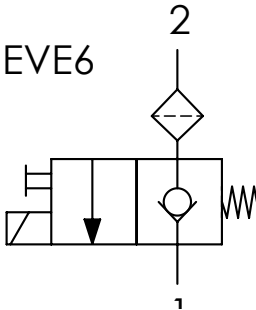
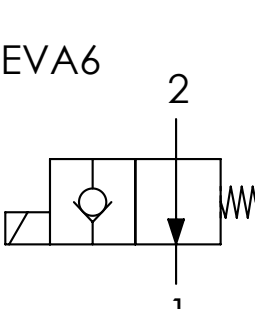
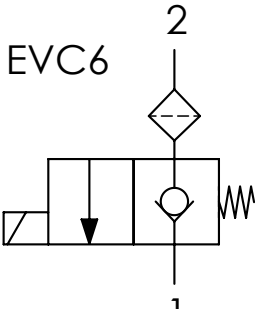
EC082A

VALVOLE A COMANDO ELETTRICO SAE8 2 VIE/2 POSIZIONI DIRETTE
2 WAYS/2 POSITIONS SAE8 ELECTRIC VALVES - DIRECT ACTING



01		02	
CODICE ORDINAZIONE ORDERING CODE		EC082A-	
02	SCHEMA (CIRCUIT)	Normalmente chiusa (Normally closed)	CNN
		Normalmente aperta (Normally open)	ONN
		Normalmente chiusa + emergenza (Normally closed + emergency)	CNV

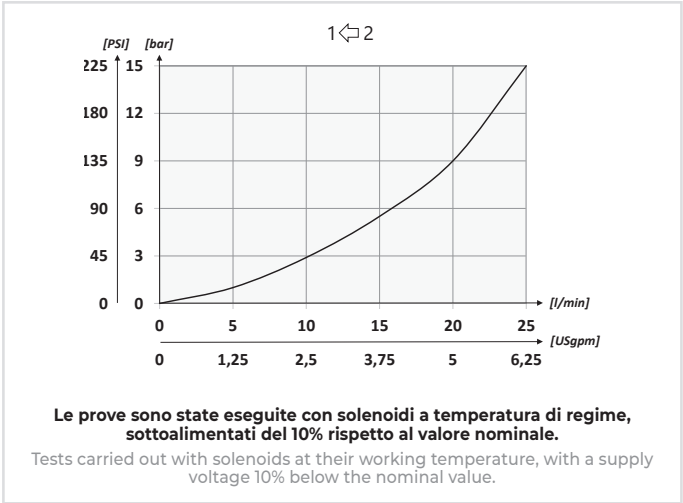
SCHEMA IDRAULICO / HYDRAULIC CIRCUIT



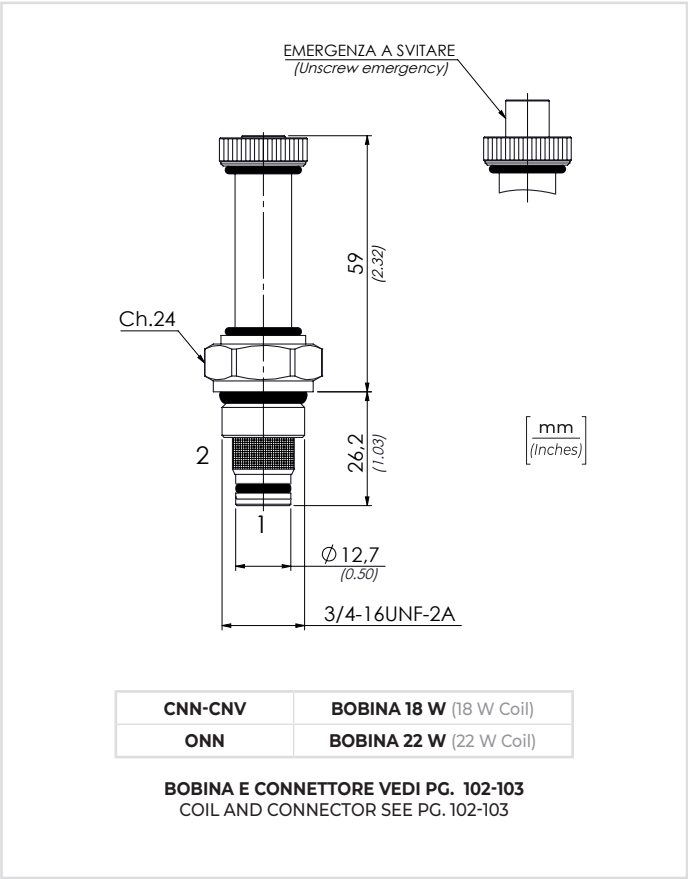
DATI TECNICI / TECHNICAL DATA

Olio idraulico - Mineral oil	ISO 6743/4 (DIN 51524)		
Viscosità olio - Oil viscosity	15-250 mm²/s (15 to 250 cSt)		
Classe di contaminazione max Max contamination index	ISO 4406:1999 Classe 18/16/13		
Temperatura dell'olio - Oil temperature	-20°C +80°C	-4°F	+176°F
Temperatura ambiente - Environment temperature	-20°C +50°C	-4°F	+122°F
È indispensabile l'utilizzo di un filtro per proteggere la valvola (filtrazione consigliata 15 µm) It is necessary a filter use to protect the valve (advised filtration 15 µm)			
Trafilamento massimo Max leakage	0,25 cm³/min - 5 gocce/min	0,015 in³/min	- 5 drops/min

PERFORMANCES



Le prove sono state eseguite con solenoidi a temperatura di regime, sottoalimentati del 10% rispetto al valore nominale.
Tests carried out with solenoids at their working temperature, with a supply voltage 10% below the nominal value.



CNN-CNV	BOBINA 18 W (18 W Coil)
ONN	BOBINA 22 W (22 W Coil)

BOBINA E CONNETTORE VEDI PG. 102-103
COIL AND CONNECTOR SEE PG. 102-103

CARATTERISTICHE TECNICHE / TECHNICAL CHARACTERISTICS

TIPO TYPE	A	PORTATA MAX (l/min) MAX FLOW (USgpm)	PRESSIONE MAX (bar) MAX PRESSURE (PSI)	PESO APPROX (kg) APPROX WEIGHT (lbt)	COPPIA DI SERRAGGIO TIGHTENING TORQUE Nm-lbt ft	CAVITÀ CAVITY
EC082A	3/4-16UNF-2A	22 (5.8)	210 (3045)	0,12 (0.26)	30 (22)	SAE 8/2

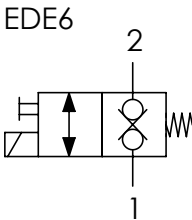
ED082A

VALVOLE A COMANDO ELETTRICO SAE8 DOPPIA TENUTA 2 VIE/2 POSIZIONI DIRETTE
2 WAYS/2 POSITIONS SAE8 DOUBLE SEALING ELECTRIC VALVES - DIRECT ACTING



CODICE ORDINAZIONE ORDERING CODE		01	02
		ED082A-	CNP
01	VALVOLE A COMANDO ELETTRICO SAE8 DOPPIA TENUTA 2 VIE/2 POSIZIONI DIRETTE (2 WAYS/2 POSITIONS SAE8 DOUBLE SEALING ELECTRIC VALVES - DIRECT ACTING)		ED082A-
02	SCHEMA (CIRCUIT)	Normalmente chiusa + emergenza (Normally closed + emergency)	CNP

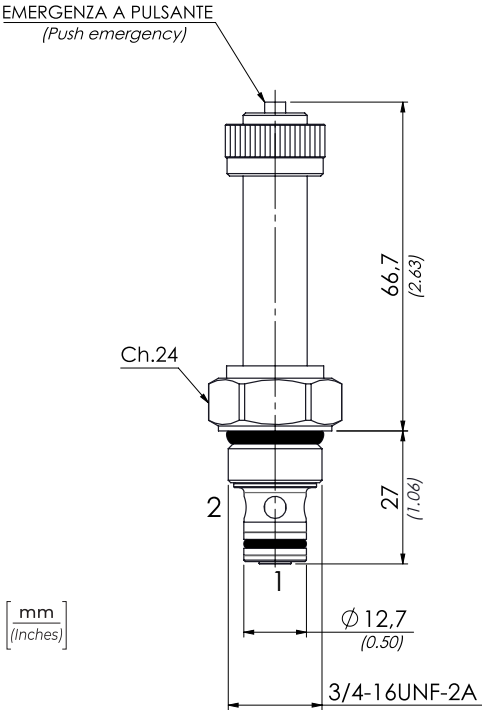
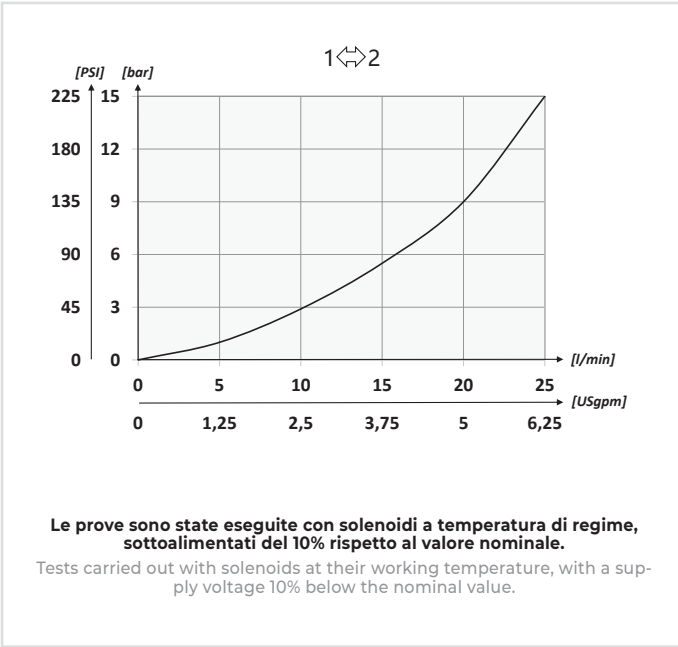
SCHEMA IDRAULICO / HYDRAULIC CIRCUIT



DATI TECNICI / TECHNICAL DATA

Olio idraulico - Mineral oil	ISO 6743/4 (DIN 51524)
Viscosità olio - Oil viscosity	15-250 mm²/s (15 to 250 cSt)
Classe di contaminazione max Max contamination index	ISO 4406:1999 Classe 18/16/13
Temperatura dell'olio - Oil temperature	-20°C +80°C -4°F +176°F
Temperatura ambiente - Environment temperature	-20°C +50°C -4°F +122°F
È indispensabile l'utilizzo di un filtro per proteggere la valvola (filtrazione consigliata 15 µm) It is necessary a filter use to protect the valve (advised filtration 15 µm)	
Trafilamento massimo Max leakage	0,25 cm³/min - 5 gocce/min 0,015 in³/min - 5 drops/min

PERFORMANCES



BOBINA 22 W E CONNETTORE VEDI PG. 102-103
22 W COIL AND CONNECTOR SEE PG. 102-103

CARATTERISTICHE TECNICHE / TECHNICAL CHARACTERISTICS

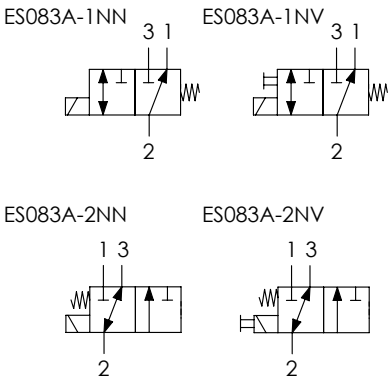
TIPO TYPE	A	PORTATA MAX (l/min) MAX FLOW (USgpm)	PRESSIONE MAX (bar) MAX PRESSURE (PSI)	PESO APPROX (kg) APPROX WEIGHT (lbt)	COPPIA DI SERRAGGIO TIGHTENING TORQUE Nm-lbt ft	CAVITÀ CAVITY
ED082A-CNP	3/4-16UNF-2A	22 (5.8)	210 (3045)	0,13 (0.28)	30 (22)	SAE 8/2

ES083A

VALVOLE A COMANDO ELETTRICO A CURSORE SAE8 3 VIE/2 POSIZIONI DIRETTE
3 WAYS/2 POSITIONS SAE8 ELECTRIC SPOOL VALVES - DIRECT ACTING



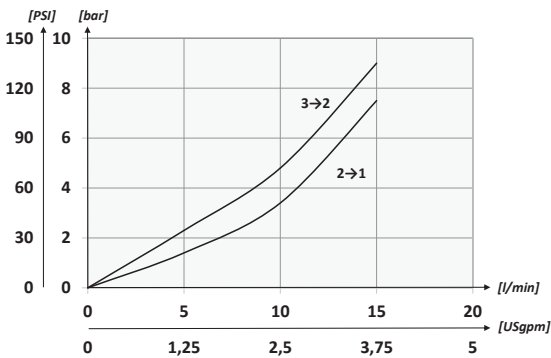
SCHEMA IDRAULICO / HYDRAULIC CIRCUIT



DATI TECNICI / TECHNICAL DATA

olio idraulico - Mineral oil	ISO 6743/4 (DIN 51524)
Viscosità olio - Oil viscosity	15-250 mm²/s (15 to 250 cSt)
Classe di contaminazione max Max contamination index	ISO 4406:1999 Classe 18/16/13
Temperatura dell'olio - Oil temperature	-20°C +80°C -4°F +176°F
Temperatura ambiente - Environment temperature	-20°C +50°C -4°F +122°F
È indispensabile l'utilizzo di un filtro per proteggere la valvola (filtrazione consigliata 15 µm) It is necessary a filter use to protect the valve (advised filtration 15 µm)	
Trafilamento massimo Max leakage	60 cm³/min 36 in³/min

PERFORMANCES



Le prove sono state eseguite con solenoidi a temperatura di regime, sottoalimentati del 10% rispetto al valore nominale.

Tests carried out with solenoids at their working temperature, with a supply voltage 10% below the nominal value.

CODICE ORDINAZIONE
ORDERING CODE

01	VALVOLE A COMANDO ELETTRICO A CURSORE SAE8 3 VIE/2 POSIZIONI DIRETTE (3 WAYS/2 POSITIONS SAE8 ELECTRIC SPOOL VALVES - DIRECT ACTING)		ES083A-
02	SCHEMA (CIRCUIT)	Vedi schema (See diagram)	1NN
		Vedi schema (See diagram)	1NV
		Vedi schema (See diagram)	2NN
		Vedi schema (See diagram)	2NV

EMERGENZA SPINGI E GIRA
(Push and Twist emergency)

Ch.24

61.8 (2.43)

39.7 (1.56)

3

2

1

Ø 14.2 (0.56)

Ø 15.8 (0.62)

3/4-16UNF-2A

[mm]
[inches]

BOBINA 22 W E CONNETTORE VEDI PG. 102-103
22 W COIL AND CONNECTOR SEE PG. 102-103

CARATTERISTICHE TECNICHE / TECHNICAL CHARACTERISTICS

TIPO TYPE	A	PORTATA MAX (l/min) MAX FLOW (USgpm)	PRESSIONE MAX (bar) MAX PRESSURE (PSI)	PESO APPROX (kg) APPROX WEIGHT (lbt)	COPPIA DI SERRAGGIO (Nm) TIGHTENING TORQUE (lbt ft)	CAVITÀ CAVITY
ES083A	3/4-16UNF-2A	12 (3.2)	210 (3045)	0,15 (0.33)	30 (22)	SAE 8/3